



# Glass Equipment (India) Limited

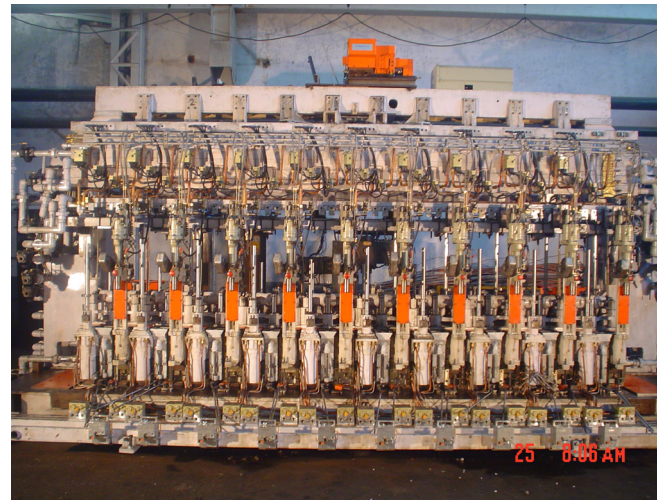
*Address:* PO Box No. 7, Bahadurgarh - 124507, Distt. Jhajjar, Haryana, INDIA.

*Phone no.:* +91 (01276) 221400 | *Fax no.:* +91 (01276) 221555, 221666

*E-mail:* [info@glasseq.com](mailto:info@glasseq.com) | *Web-Site:* <http://www.glasseq.com>



## IS FORMING MACHINES



- TYPE : EF
- AVAILABLE IN 8, 10 & 12 SECTION CONFIGURATION
- PRODUCTION FLEXIBILITY IN SG 4 ¼” DG, 5” DG & 3” TG
- INTERCHANGABLE PARTS & MECHANISMS

GEIL offers a truly diversified spectrum of IS Forming Machines for efficient glass container production. Well designed modular sections and machine structures make it possible to optimally meet specific production output requirements.

Versatile enough to manufacture glass containers of capacities ranging from 5ml to 3200ml, GEIL's machines are supplied with Electronic timing control systems and are built up to 12 sections with single, double or triple gobs for either blow & blow or press & blow or narrow neck press & blow process with various centers.

*Regd. (Head) Office:* 2, Red Cross Place, Kolkata – 700001, INDIA.

*Phone:* +91 (033) 22482341-4 | *Fax:* +91 (033) 22482367 | *E-mail:* [hq@glasseq.com](mailto:hq@glasseq.com)



# Glass Equipment (India) Limited

Address: PO Box No. 7, Bahadurgarh - 124507, Distt. Jhajjar, Haryana, INDIA.  
Phone no.: +91 (01276) 221400 | Fax no.: +91 (01276) 221555, 221666  
E-mail: [info@glasseq.com](mailto:info@glasseq.com) | Web-Site: <http://www.glasseq.com>



## MACHINE FEATURES

	SINGLE GOB	4.1/4" DOUBLE GOB	5" DOUBLE GOB	3" TRIPLE GOB
ELECTRONIC TIMING CONTROL	♦	♦	♦	♦
SERVO DRIVE SYSTEM	♦	♦	♦	♦
SERVO GOB DISTRIBUTOR	♦	♦	♦	♦
ELECTRONIC PUSHER SYSTEM	♦	♦	♦	♦
DELIVERY SYSTEM FOR SINGLE SCOOP ARRANGEMENT	♦	♦	♦	♦
SCOOP, TROUGH & DEFLECTOR	♦	♦	♦	♦
AUTOMATIC LUBRICATION	♦	♦	♦	♦
BASE MOUNTED POPPET TYPE SOLENOID/AIR OPERATED VALVES	♦	♦	♦	♦
PRESSURE REGULATORS WITH FEEDBACK ARRANGEMENT	♦	♦	♦	♦
RIGID BEAM OR SHIFTING TYPE FOR SG/DG CONVERSION	♦	♦	♦	♦
UPRIGHTS WITH INTEGRAL AIR MANIFOLDS	♦	♦	♦	♦
BED WITH BOTTOM INDIVIDUAL WIND COOLING	♦	♦	♦	♦
SETTLE BLOW, FINAL BLOW, FINISH COOLING, PLUNGER UP & DOWN, COUNTER BLOW, MANIFOLDS IN STAINLESS STEEL & PIPING OF ADEQUATE CAPACITY.	♦	♦	♦	♦
AIR TANKS FOR PLUNGER UP OPERATION (P & B & NNPB ONLY)	♦	♦	♦	♦
MODULER 'EF' TYPE SECTION FRAME CAST FROM SPECIAL IRON ALLOY	♦	♦	♦	♦
MOC LINKAGE MECHANISM IN OIL BATH	♦	♦	♦	♦
2 WAY AIR OPERATED FUNNEL MECHANISM	♦	♦	♦	♦
PANTOGRAPH TYPE BAFFLE MECHANISM	♦	♦	♦	♦
PLUNGER & BLOW HEAD MECHANISMS -QUICK CHANGE TYPE	♦	♦	♦	♦
INVERT & TAKE OUT MECHANISMS - WITH CONSTANT CUSHION	♦	♦	♦	♦
NECK RING MECHANISM	♦	♦	♦	♦
DAMPER TYPE BLOW MOULD COOLING MECHANISM	♦	♦	♦	♦
BLANK MOULD COOLING	♦	♦	♦	♦
BLOW BRACKET & ANTI DEFLECTION TYPE BLANK BRACKET	♦	♦	♦	♦
CONVEYOR WITH MOTORISED HEIGHT ADJUSTMENT	♦	♦	♦	♦
DUAL HEAD PROTECTED SILENT CHAIN	♦	♦	♦	♦
REGULATED DEAD PLATE COOLING	♦	♦	♦	♦
RIGID MACHINE OR DG/TG CONVERTIBLE	♦	♦	♦	♦
FORMING PROCESS	♦	♦	♦	♦
BLOW & BLOW	♦	♦	♦	♦
PRESS & BLOW	♦	♦	♦	♦
NARROW NECK PRESS & BLOW	♦	♦	♦	♦



# Glass Equipment (India) Limited

*Address:* PO Box No. 7, Bahadurgarh - 124507, Distt. Jhajjar, Haryana, INDIA.

*Phone no.:* +91 (01276) 221400 | *Fax no.:* +91 (01276) 221555, 221666

*E-mail:* [info@glasseq.com](mailto:info@glasseq.com) | *Web-Site:* <http://www.glasseq.com>



## VARIABLES

FUNNEL ARM

BAFFLE ARM

BLOW HEAD ARM

TAKE OUT TONG HEAD

MOULD HOLDER WITH INSERT

AND MOUNTING PARTS

TAKE OUT TONG ARM

NECK RING HOLDER

STANDARD/ QUICK CHANGE

STANDARD/ QUICK CHANGE/PANTOGRAPH TYPE

STANDARD/QUICK CHANGE

ADJUSTABLE

SINGLE/DOUBLE/TRIPLE DECK FOR BLOW & BLANK

BELT DRIVEN

*Regd. (Head) Office:* 2, Red Cross Place, Kolkata – 700001, INDIA.

*Phone:* +91 (033) 22482341-4 | *Fax:* +91 (033) 22482367 | *E-mail:* [hq@glasseq.com](mailto:hq@glasseq.com)



# Glass Equipment (India) Limited

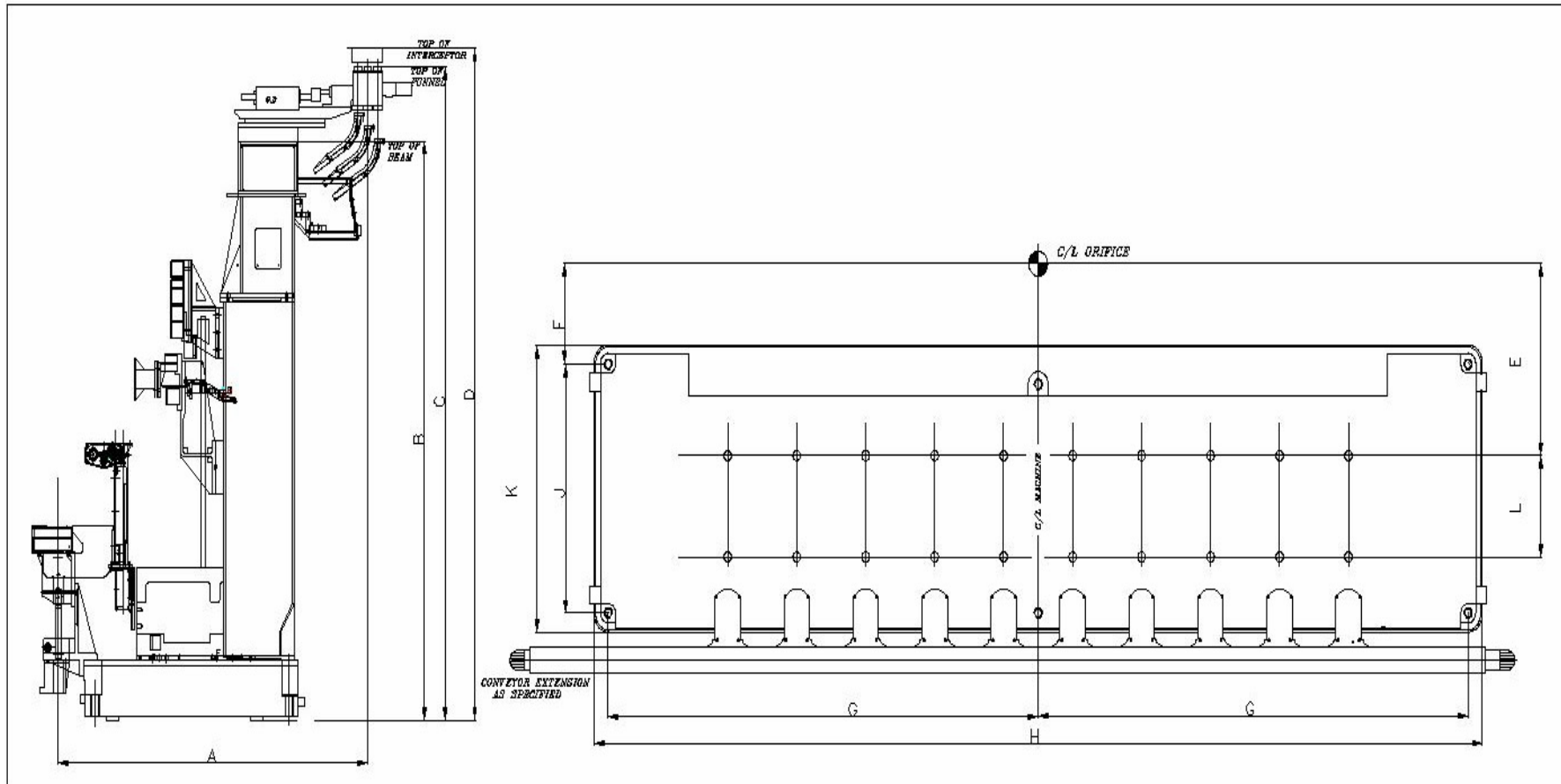
Address: PO Box No. 7, Bahadurgarh - 124507, Distt. Jhajjar, Haryana, INDIA.

Phone no.: +91 (01276) 221400 | Fax no.: +91 (01276) 221555, 221666

E-mail: [info@glasseq.com](mailto:info@glasseq.com) | Web-Site: <http://www.glasseq.com>



## MACHINE LAYOUT





# Glass Equipment (India) Limited

Address: PO Box No. 7, Bahadurgarh - 124507, Distt. Jhajjar, Haryana, INDIA.  
Phone no.: +91 (01276) 221400 | Fax no.: +91 (01276) 221555, 221666  
E-mail: [info@glasseq.com](mailto:info@glasseq.com) | Web-Site: <http://www.glasseq.com>



## DIMENSIONAL DETAILS OF IS MACHINE

DIMENSION	DELIVERY	IS - 8	IS - 10	IS - 12
A	3"TG 4.1/4"DG	2363 mm	2363 mm	2667.3 mm
	5"DG	2390 mm	2390 mm	2667.3 mm
B	3" TG & 4.3/8DG	3080 mm	3495.6 mm	3910 mm
C	3"TG 4.1/4"DG	3539 mm	3930 mm	4396 mm
	4.3/8DG	3550 mm	3942 mm	4362 mm
D	3"TG 4.1/4"DG	3774 mm	4165 mm	4631 mm
	4.3/8DG	3785 mm	4177 mm	4597mm
	4.1/4 DG	1168.4 mm	1168.4 mm	1425.5 mm
E	3" TG	1168.4 mm	1168.4 mm	1425.5 mm
	5" DG	1158.8 mm	1158.8 mm	1419.2 mm
F	4.1/4"DG,5"DG,3"TG	638.9 mm	607.4 mm	867.7 mm
G	4.1/4"DG,5"DG,3"TG	2476.5 mm	3323.4 mm	3854.4 mm
H	4.1/4"DG,5"DG,3"TG	5181.6 mm	6866.4 mm	7931.2 mm
J	4.1/4"DG,5"DG,3"TG	1301.7 mm	1500 mm	1651 mm
K	4.1/4"DG,5"DG,3"TG	1530.3 mm	1737 mm	1883 mm
	4.1/4 DG	610.4 mm	610.4 mm	610.4 mm
L	3" TG	610.4 mm	610.4 mm	610.4 mm
	5" DG	629.5 mm	629.5 mm	629.5 mm



# Glass Equipment (India) Limited

Address: PO Box No. 7, Bahadurgarh - 124507, Distt. Jhajjar, Haryana, INDIA.  
 Phone no.: +91 (01276) 221400 | Fax no.: +91 (01276) 221555, 221666  
 E-mail: [info@glasseq.com](mailto:info@glasseq.com) | Web-Site: <http://www.glasseq.com>



## WARE SPECIFICATION

	SINGLE GOB		4.1/4" DOUBLE GOB		
	B & B	P & B	B&B	P&B	NNPB
<b>CONTAINER LIMITS</b>					
Maximum body diameter with vacuum	170mm(6.688")	170mm(6.688")	80mm(3.125")	80mm(3.125")	-
Maximum body diameter without vacuum	178mm(7")	178mm(7")	90mm(3.562")	90mm(3.562")	-
Maximum body diameter with blow mould cooling	156mm(6.125")	156mm(6.125")	80mm(3.125")	80mm(3.125")	-
<b>HEIGHT UNDER FINISH</b>					
Minimum	35mm(1.375")	48mm(1.875")	57mm(2.25")	46mm(1.81")	46mm(1.81")
Maximum	343mm(13.5")	267mm(10.5")	292mm(11.5")	282mm(11.125")	282mm(11.125")
<b>FINISH DIAMETER</b>					
Maximum	48mm	120mm	48mm	83mm	38mm

5" DOUBLE GOB			3" TRIPLE GOB		
B&B	P&B	NNPB	B&B	P&B	NNPB
95mm(3.688")	95mm(3.688")	-	45mm(1.75")	45mm(1.75")	-
102mm(4")	102mm(4")	-	52mm(2.062")	52mm(2.062")	-
100mm(3.938")	100mm(3.938")	-	51mm(2")	51mm(2")	-
60mm(2.375")	60mm(2.375")	-	58mm(2.281")	45mm(1.75")	45mm(1.75")
325mm(12.813")	288mm(11.344")	-	250mm(9.875")	240mm(9.437")	240mm(9.437")
48mm	90mm	-	30mm	38mm	38mm



# Glass Equipment (India) Limited

Address: PO Box No. 7, Bahadurgarh - 124507, Distt. Jhajjar, Haryana, INDIA.

Phone no.: +91 (01276) 221400 | Fax no.: +91 (01276) 221555, 221666

E-mail: [info@glasseq.com](mailto:info@glasseq.com) | Web-Site: <http://www.glasseq.com>



## SERVICE REQUIREMENTS

Application	Pressure		8 SECTION		10SECTION		12 SECTION	
	bar	p.s.i.	Nm <sup>3</sup> /min	c.f.m.	Nm <sup>3</sup> /min	c.f.m.	Nm <sup>3</sup> /min	c.f.m.
Low Pressure Operating Air	2.1	30	9.6	339	12	424	14.4	500
High Pressure Operating Air	3.1	45	5	177	6.3	222	7.6	268
Forming Air Blow & Blow	3.1	45	12.6	445	15.8	558	19	671
Forming Air Press & Blow	3.1	45	15.8	558	19.8	699	23.8	840
Total High Pressure Air*	3.1	45	20.8	735	26.1	921	31.4	1108
Vacuum	635mm Hg	25" Hg	8.4	297	10.5	371	12.6	444
Cooling Air	600mm H <sub>2</sub> O	23½ H <sub>2</sub> O	600	21188	750	26486	1000	31784
Cooling Water	2.1	30	15 l/day	3¾ US gal/min	15 l/day	3¾ US gal/min	15 l/day	3¾ US gal/min
Lubrication Oil	80**	1160**	10 l/day	2½ US gal/day	12.5 l/day	3¼ US gal/day	15 l/day	2 US gal/day
Cushioning Oil	2.1	30	2-5 l/day	1/2 - 1¼ US gal/day	3-6 l/day	¾ - 1½ US gal/day	4 -7 l/day	1/4-1 US gal/day

Regd. (Head) Office: 2, Red Cross Place, Kolkata – 700001, INDIA.

Phone: +91 (033) 22482341-4 | Fax: +91 (033) 22482367 | E-mail: [hq@glasseq.com](mailto:hq@glasseq.com)